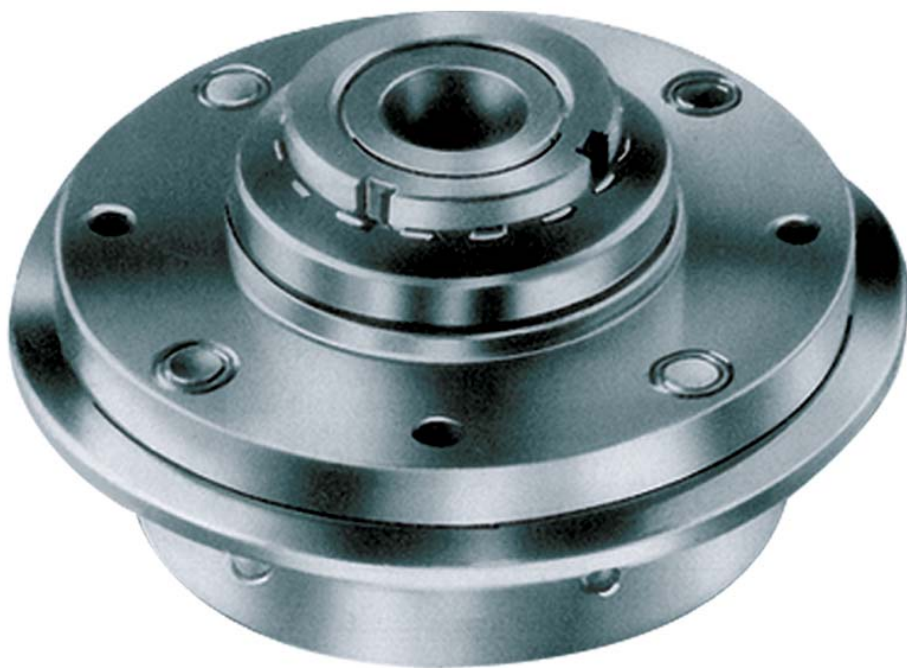


Torque Limiter-LCS

Dimensions of standard version



Kurvengetriebe
Bausteine der Automation

M0990DE0211 © MIKSCH GmbH

- 1 -

Torque Limiter LCS

MIKSCH
accelerates

Hersteller:

MIKSCH GmbH
Reutlinger Str. 5
73037 Göppingen
Germany

Tel.: +49-(0)7161/6724-0
Fax: +49-(0)7161/14429
E-Mail: miksch@miksch.eu
www.miksch.eu

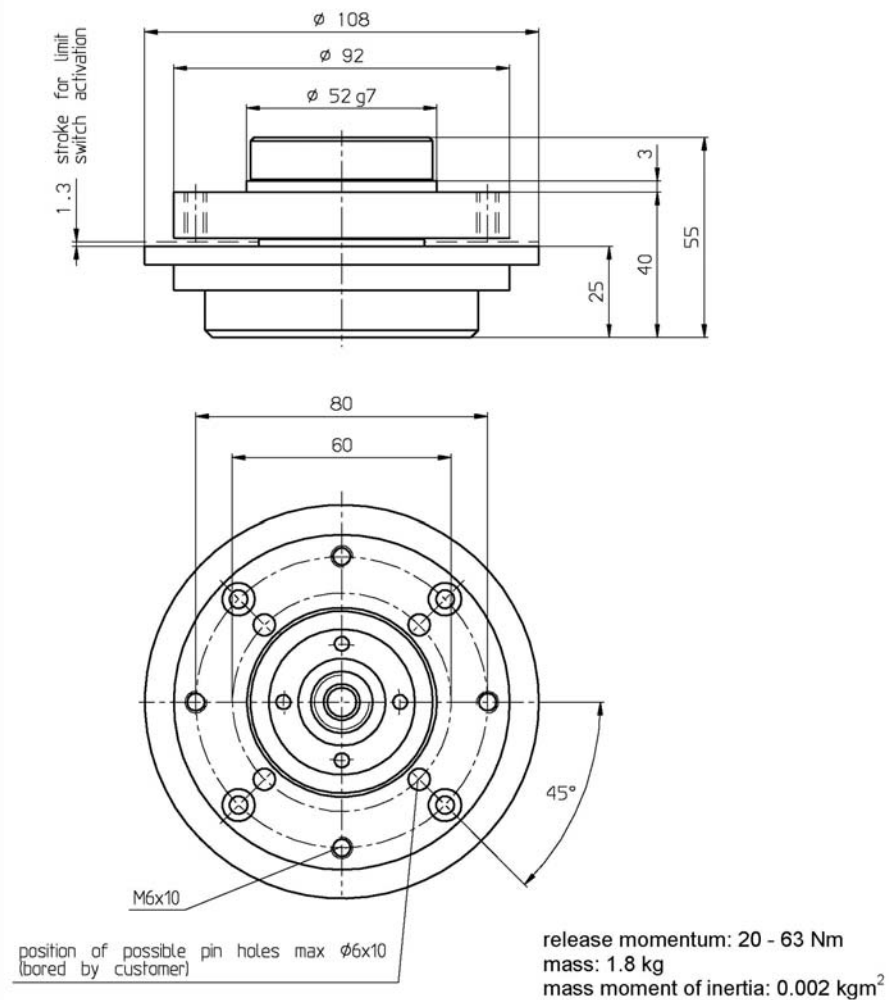
Die
MIKSCH GmbH
wird vertreten durch die geschäftsführenden Gesellschafter:
Heribert Miksch und
Dipl.-Ing. Alexander Miksch, MBA

© 2011 MIKSCH GmbH, 73037 Göppingen

Inhaltsverzeichnis

1	Torque Limiter LCS111	2
2	Torque Limiter LCS121	3
3	Torque Limiter LCS131	4
4	Torque Limiter LCS141	5
5	Torque Limiter LCS151	6
6	Torque Limiter LCS161	7

1 Torque Limiter LCS111



This torque limiter is available in standard for rotoblock indexers of the product size 50 and 63. The release momentum is brought about by the spring arming on mounting and is not adjustable.

Safety instructions:

Axiale Lasten bzw. Querkräfte können das Auslösemoment verändern.

The torque limiter is intended exclusively for the protection of the cam mechanism against overstraining.

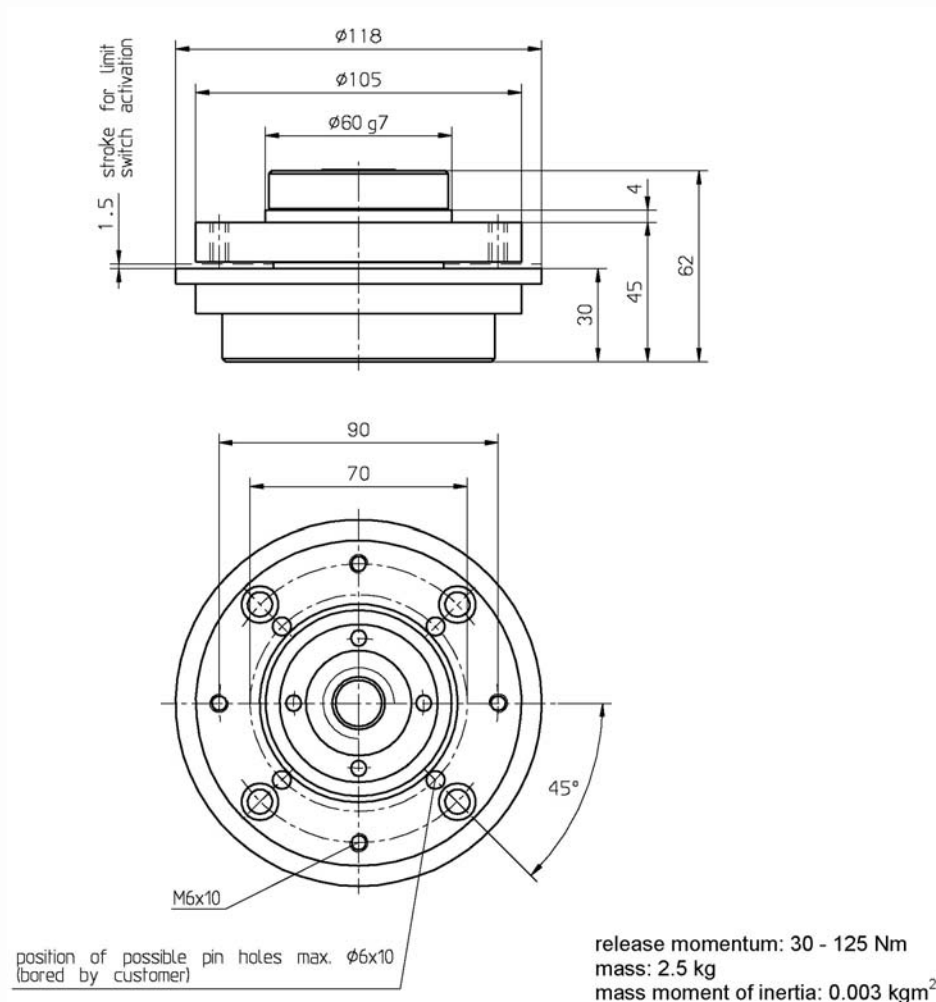
It does not give protection to the operating personnel or to parts that are moved by the cam mechanism.

After release of the torque limiter no more rotational moment will be conveyed to the attached components.

I.e. these latter will, obeying the force of gravity, move downward (e.g. with the unsymmetrically loaded vertical bucket conveyors or the rotational stars).

After release of the torque limiter the drive of the mechanism is to be turned off immediately. Continued running of the drive can lead to the ruining of the coupling.

2 Torque Limiter LCS121



This torque limiter is available in standard for rotoblock indexers of the product size 63 and 100. The release momentum is brought about by the spring arming on mounting and is not adjustable.

Safety instructions:

Axiale Lasten bzw. Querkräfte können das Auslösemoment verändern.

The torque limiter is intended exclusively for the protection of the cam mechanism against overstraining.

It does not give protection to the operating personnel or to parts that are moved by the cam mechanism.

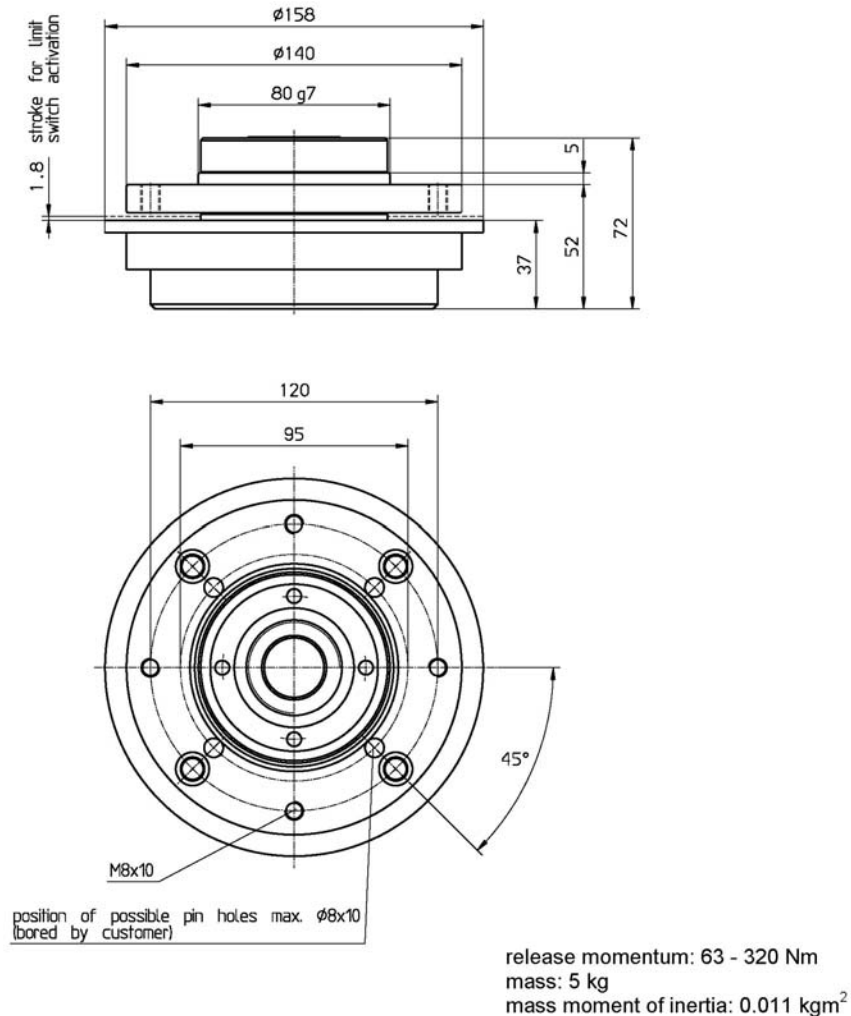
After release of the torque limiter no more rotational moment will be conveyed to the attached components.

I.e. these latter will, obeying the force of gravity, move downward (e.g. with the unsymmetrically loaded vertical bucket conveyors or the rotational stars).

After release of the torque limiter the drive of the mechanism must be turned off immediately.

Continued running of the drive can lead to the ruining of the coupling.

3 Torque Limiter LCS131



This torque limiter is available in standard for rotoblock indexers of the product size 100 to 140. The release momentum is brought about by the spring arming on mounting and is not adjustable.

Safety instructions:

Axiale Lasten bzw. Querkräfte können das Auslösemoment verändern.

The torque limiter is intended exclusively for the protection of the cam mechanism against overstraining.

It does not give protection to the operating personnel or to parts that are moved by the cam mechanism.

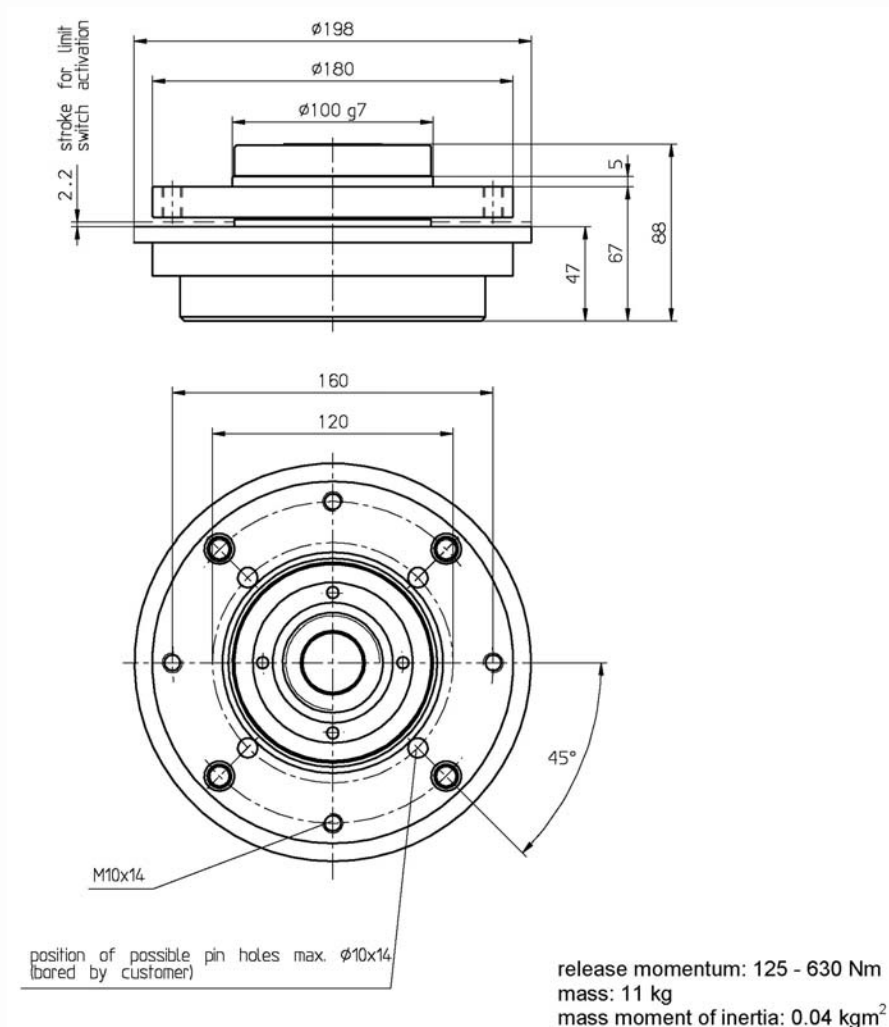
After release of the torque limiter no more rotational moment will be conveyed to the attached components.

i.e. these latter will, obeying the force of gravity, move downward (e.g. with the unsymmetrically loaded vertical bucket conveyors or the rotational stars).

After release of the torque limiter the drive of the mechanism must be turned off immediately.

Continued running of the drive can lead to the ruining of the coupling.

4 Torque Limiter LCS141



This torque limiter is available in standard for rotoblock indexers of the product size 50 100 to 160. The release momentum is brought about by the spring arming on mounting and is not adjustable.

Safety instructions:

Axiale Lasten bzw. Querkräfte können das Auslösemoment verändern.

The torque limiter is intended exclusively for the protection of the cam mechanism against overstraining.

It does not give protection to the operating personnel or to parts that are moved by the cam mechanism.

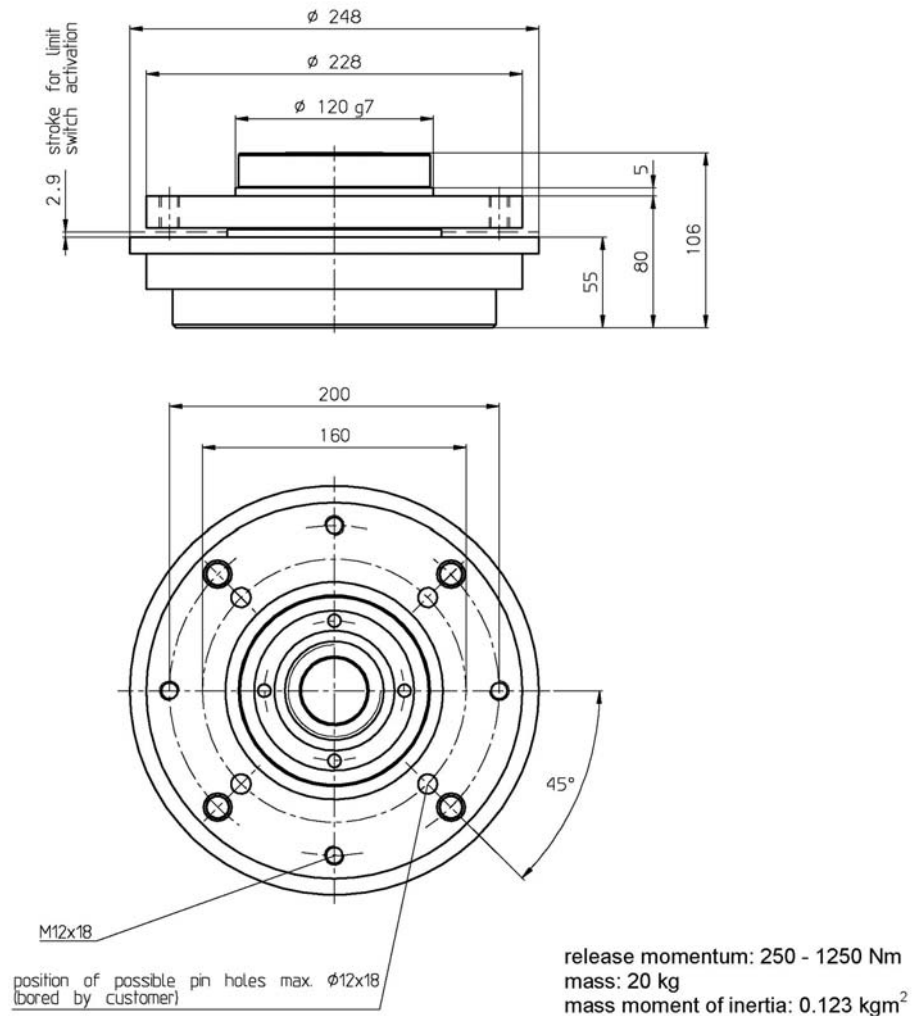
After release of the torque limiter no more rotational moment will be conveyed to the attached components.

I.e. these latter will, obeying the force of gravity, move downward (e.g. with the unsymmetrically loaded vertical bucket conveyors or the rotational stars).

After release of the torque limiter the drive of the mechanism must be turned off immediately.

Continued running of the drive can lead to the ruining of the coupling.

5 Torque Limiter LCS151



This torque limiter is available in standard for rotoblock indexers of the product size 140 to 250. The release momentum is brought about by the spring arming on mounting and is not adjustable.

Safety instructions:

Axiale Lasten bzw. Querkräfte können das Auslösemoment verändern.

The torque limiter is intended exclusively for the protection of the cam mechanism against overstraining.

It does not give protection to the operating personnel or to parts that are moved by the cam mechanism.

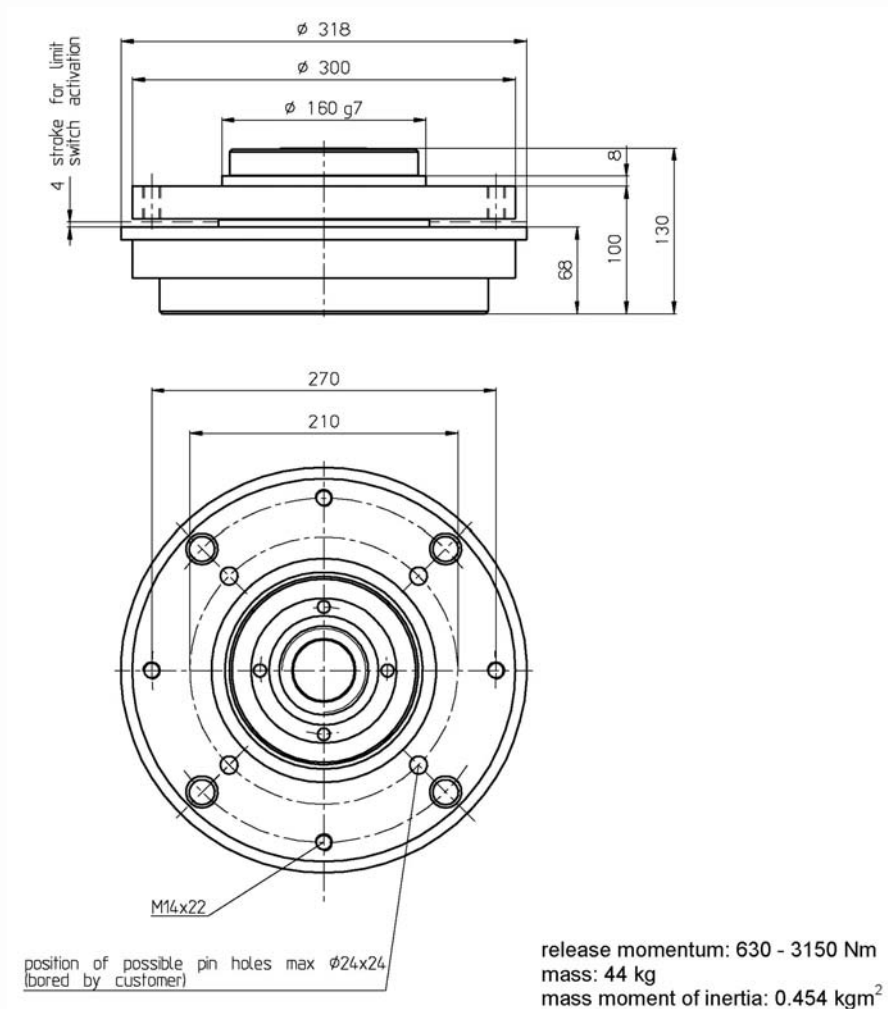
After release of the torque limiter no more rotational moment will be conveyed to the attached components.

I.e. these latter will, obeying the force of gravity, move downward (e.g. with the unsymmetrically loaded vertical bucket conveyors or the rotational stars).

After release of the torque limiter the drive of the mechanism is to be turned off immediately.

Continued running of the drive can lead to the ruining of the coupling.

6 Torque Limiter LCS161



This torque limiter is available in standard for rotoblock indexers of the product size 160 to 250. The release momentum is brought about by the spring arming on mounting and is not adjustable.

Safety instructions:

Axiale Lasten bzw. Querkräfte können das Auslösemoment verändern.

The torque limiter is intended exclusively for the protection of the cam mechanism against overstraining.

It does not give protection to the operating personnel or to parts that are moved by the cam mechanism.

After release of the torque limiter no more rotational moment will be conveyed to the attached components.

I.e. these latter will, obeying the force of gravity, move downward (e.g. with the unsymmetrically loaded vertical bucket conveyors or the rotational stars).

After release of the torque limiter the drive of the mechanism must be turned off immediately.

Continued running of the drive can lead to the ruining of the coupling.