

# RIGIDIAL Index table

All illustrations in the middle of a dwell period



RIGIDIAL Index table

**Manufacturer:**

MIKSCH GmbH  
Reutlinger Str. 5  
73037 Göppingen  
Germany

Phone: +49-(0)7161/6724-0  
Fax: +49-(0)7161/6724-99  
E-Mail: [miksch@miksch.eu](mailto:miksch@miksch.eu)  
[www.miksch.eu](http://www.miksch.eu)



MIKSCH GmbH  
is represented by the acting partners:  
Heribert Miksch and  
Dipl.-Ing. Alexander Miksch, MBA

**Certified quality management**

Quality is an integral part of our company.

Our quality management system has already been introduced in 2004 and it is certified acc. to DIN EN ISO 9001.

It supports our classical quality principle: Quality control from the design to the delivery to the customer.

More Details and the current certificate is available on our website at <http://www.miksch.de/en/miksch.html>

© 2017 MIKSCH GmbH, 73037 Göppingen

Table of contents

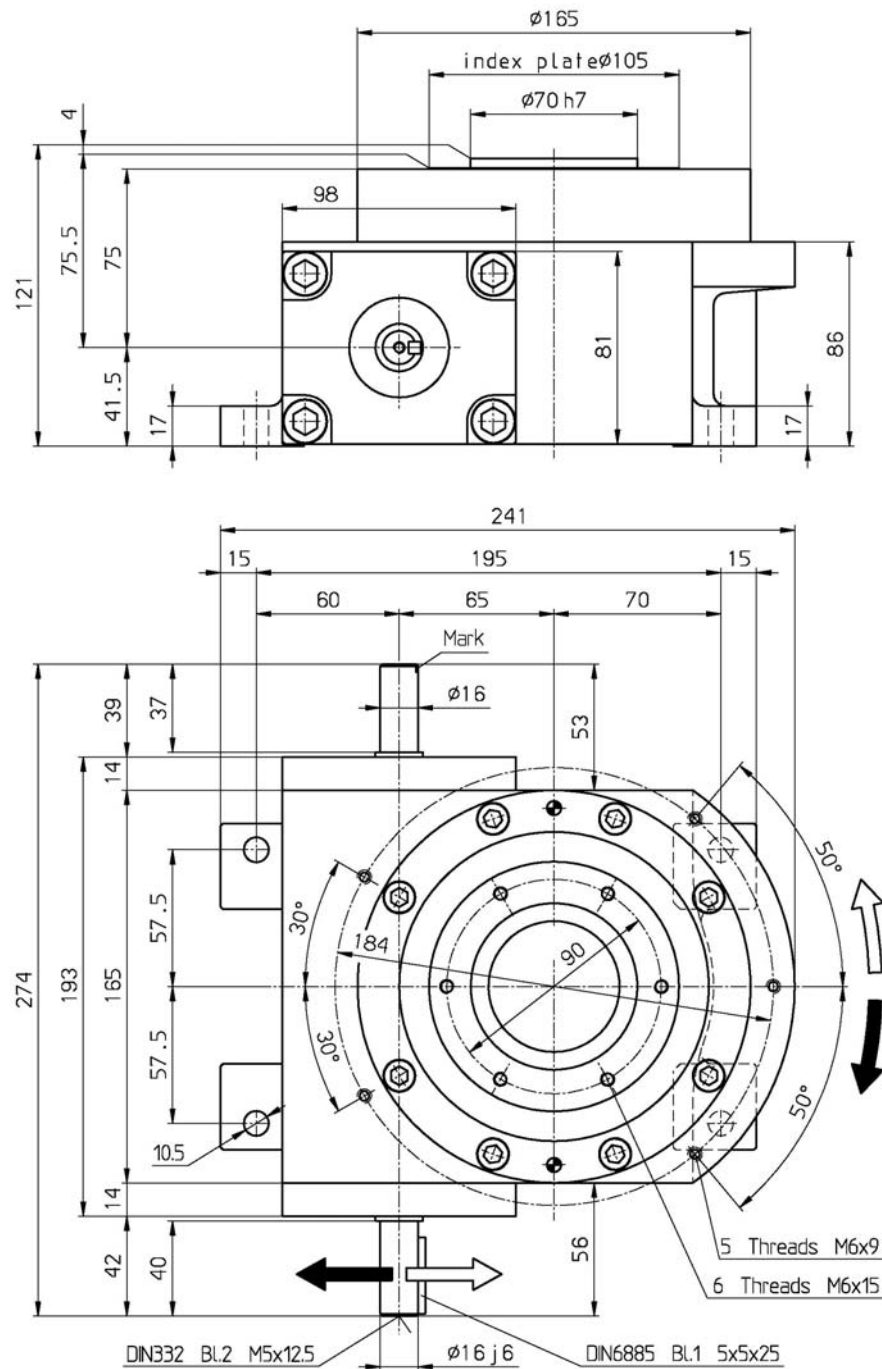
1 RIGIDIAL Index Table RIG04 .....2

2 RIGIDIAL Index table RIG06.....4

3 RIGIDIAL Index table RIG09.....6

# 1 RIGIDIAL Index Table RIG04

all illustrations in the middle of a dwell period

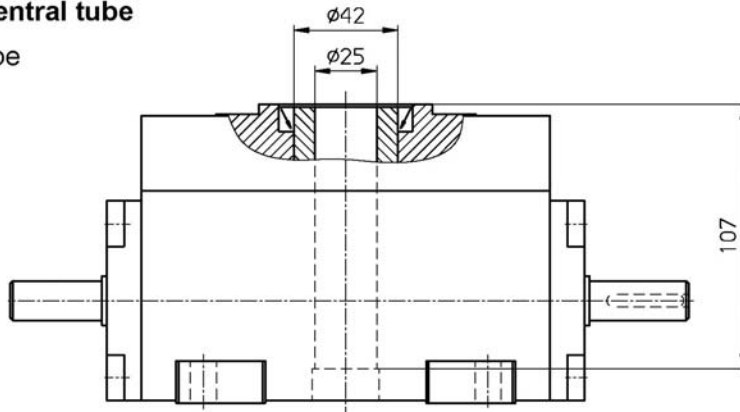


The shaft  $\varnothing 16 \times 37$  is to be used only as a support for the limit switch operating cams.  
Direction of standard rotation as shown by arrows (right hand cam)

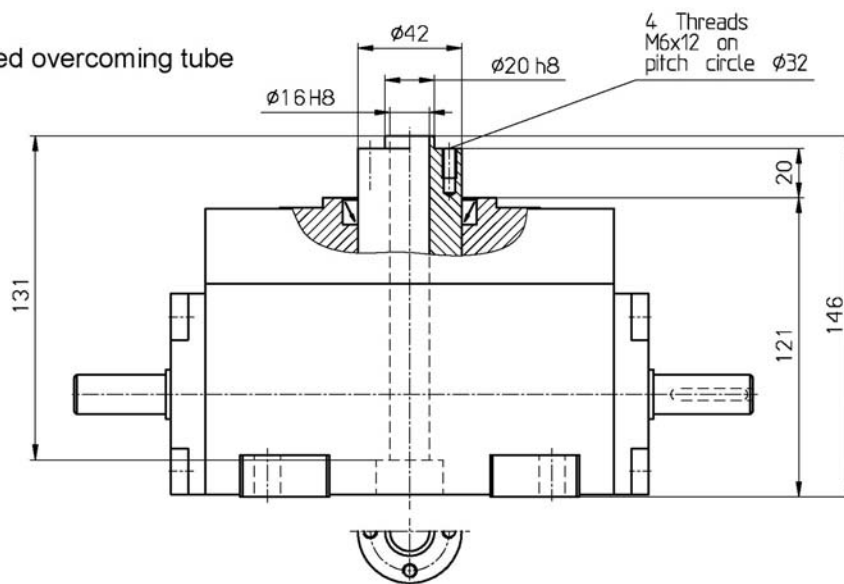
## Optional versions

### Versions of central tube

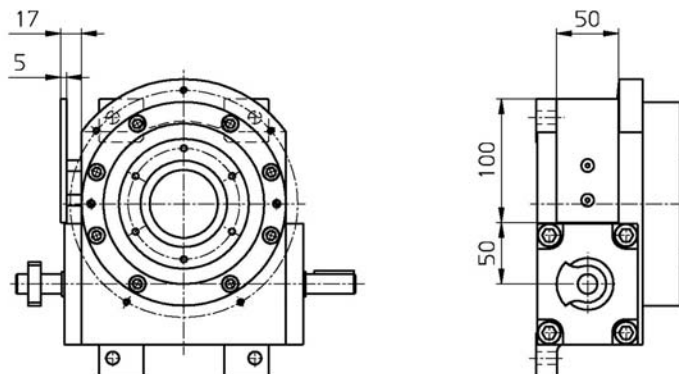
**VCT** fixed tube



**VCP** fixed overcoming tube



**Attachment for microswitch** comprising assembly plate and cam for microswitch



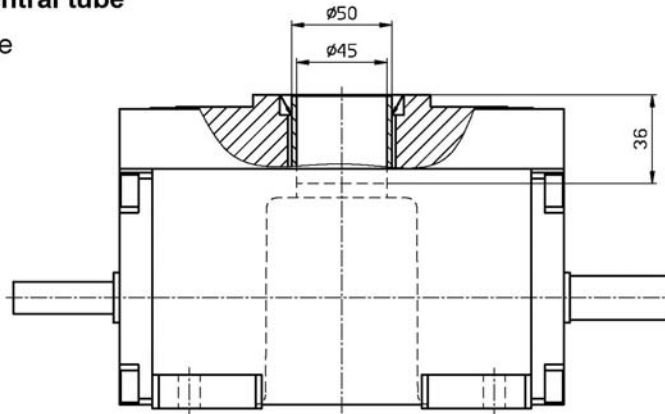




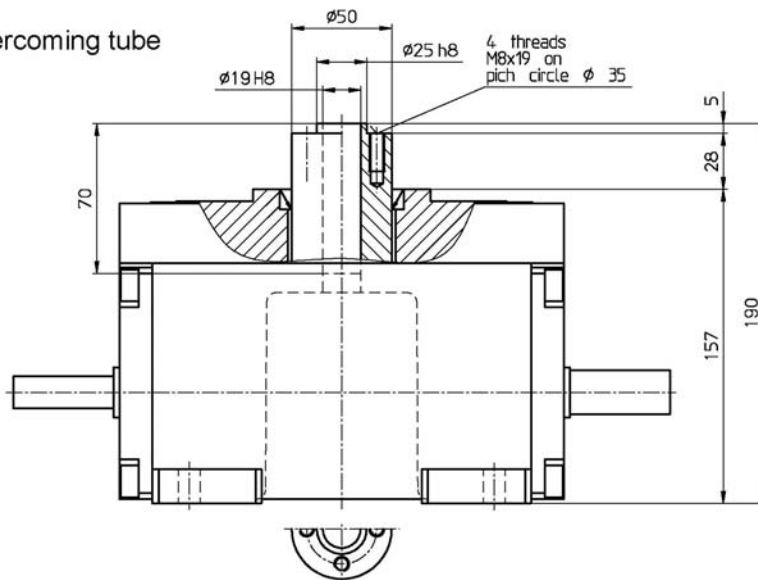
## Optional versions

### Versions of central tube

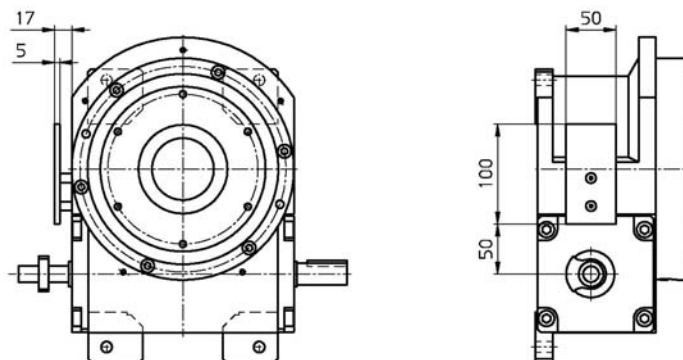
**VCT** fixed tube



**VCP** fixed overcoming tube



**Attachment for microswitch** comprising assembly plate and cam for microswitch



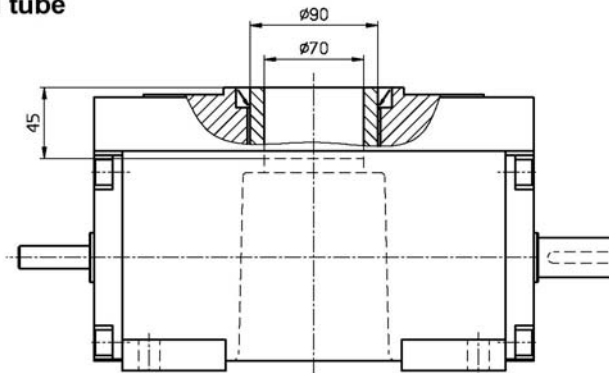




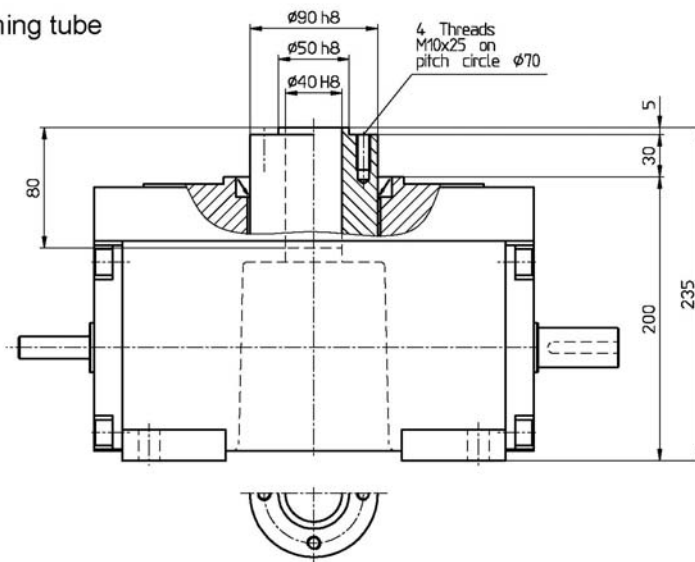
## Optional versions

### Versions of central tube

**VCT** fixed tube



**VCP** fixed overcoming tube



**Attachment for microswitch** comprising assembly plate and cam for microswitch

